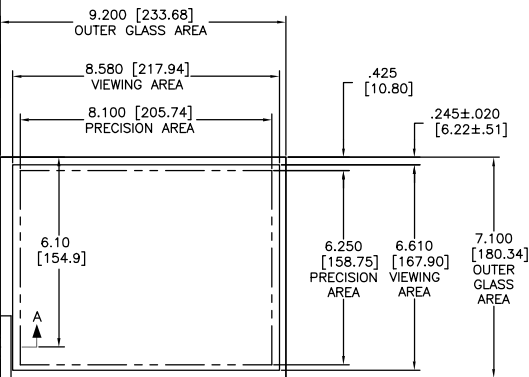
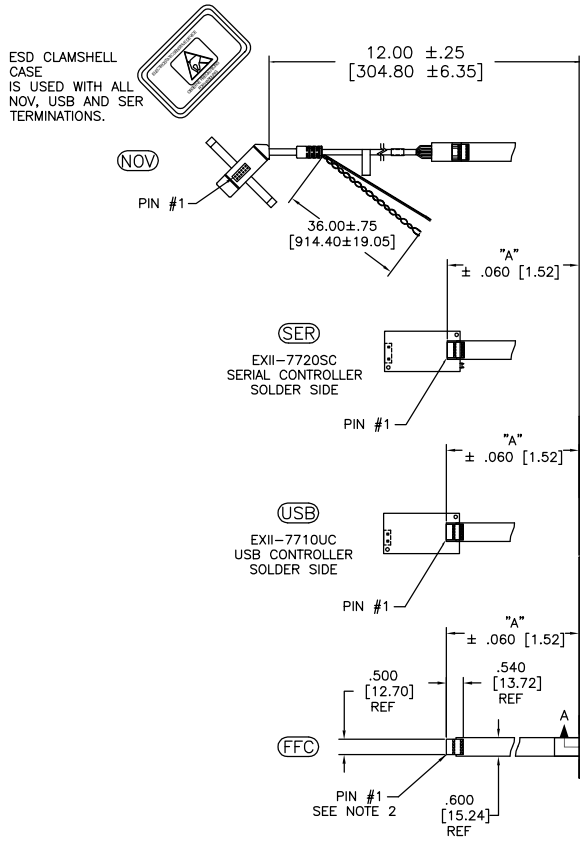
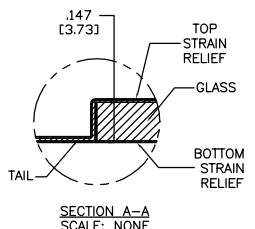
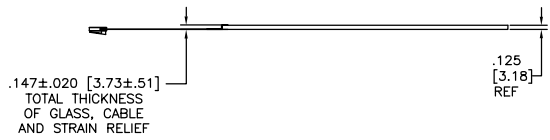


THIS PRODUCT IS MANUFACTURED IN ACCORDANCE WITH THE CURRENT CLARTEK II CAPACITIVE TOUCH SCREEN SPECIFICATION 23655.

OGA DIAGONAL: 11.62 [295.18]
 VA DIAGONAL: 10.84 [275.46]
 PA DIAGONAL: 10.25 [260.26]



TOP LEVEL NUMBER	TYPE	DIM "A" (TOTAL GLASS TO CONNECTOR)	A/G FINISH
17-8021-203	FFC	4.27" [108.46]	AG500
17-8021-205	FFC	8.00" [203.20]	AG500
17-8021-206	NOV	SEE DWG	AG500
17-8021-217	USB	4.27" [108.46]	AG500
17-8021-221	SER	4.27" [108.46]	AG500
17-8021-225	USB	8.00" [203.20]	AG500
17-8021-227	SER	8.00" [203.20]	AG500



PINOUT	
1	LR
2	LL
3	SHIELD
4	UL
5	UR

- NOTES:**
1. WEIGHT OF GLASS IN GRAMS: 321.06 ±10%
 2. 5 PIN AMP CONNECTOR LATCH STYLE HOUSING P/N: 487526-4 TIN CONTACTS P/N: 2-487406-4 HOUSING ORIENTED WITH LATCH DOWN

UNITS	INCHES [MM]
TOLERANCES UNLESS OTHERWISE SPECIFIED	
.X	±
.XX	±.03 [.76]
.XXX	±.015 [.38]
ANGLES	±1°
THIRD ANGLE PROJECTION	
DO NOT SCALE DRAWING	
SCALE	1 = 1

3M 3M TOUCH SYSTEMS
 METHUEN, MA
 USA
 ©COPYRIGHT 2005
 THIS DOCUMENT IS COPYRIGHTED PROPERTY OF THE 3M COMPANY AND MAY NOT BE REPRODUCED WITHOUT 3M WRITTEN PERMISSION OR USED OR DISCLOSED FOR OTHER THAN 3M AUTHORIZED PURPOSES.

REV	CHANGE NOTICE	DATE	DRW
02	REVISED PER CO 026945	2/07	MDS
01	INITIAL RELEASE PER CO 021753	9/05	KAC

TITLE
MARKETING DRAWING
 17-802X-2XX

DRAWN	K. CROWLEY	9/05	CAD FORMAT	AUTOCAD	SHEET	1 OF 1
SIZE	DOCUMENT NO.		82809-MKT		REV	02