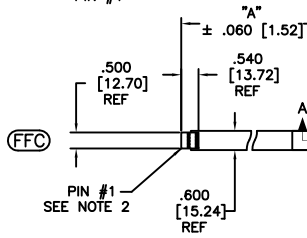
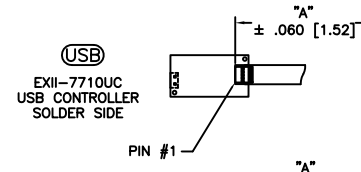
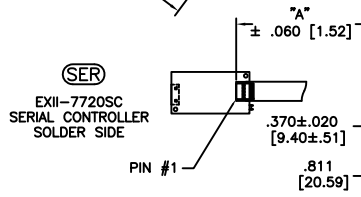
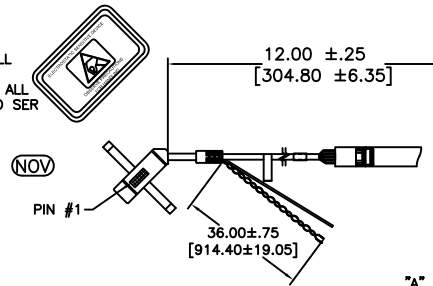


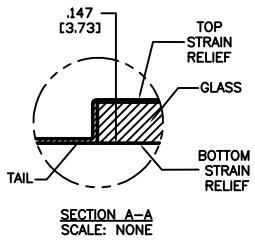
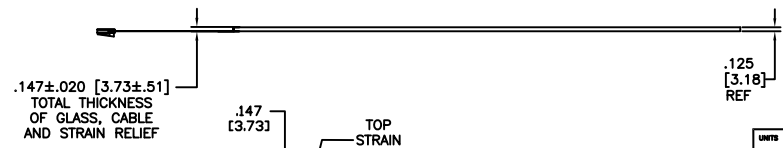
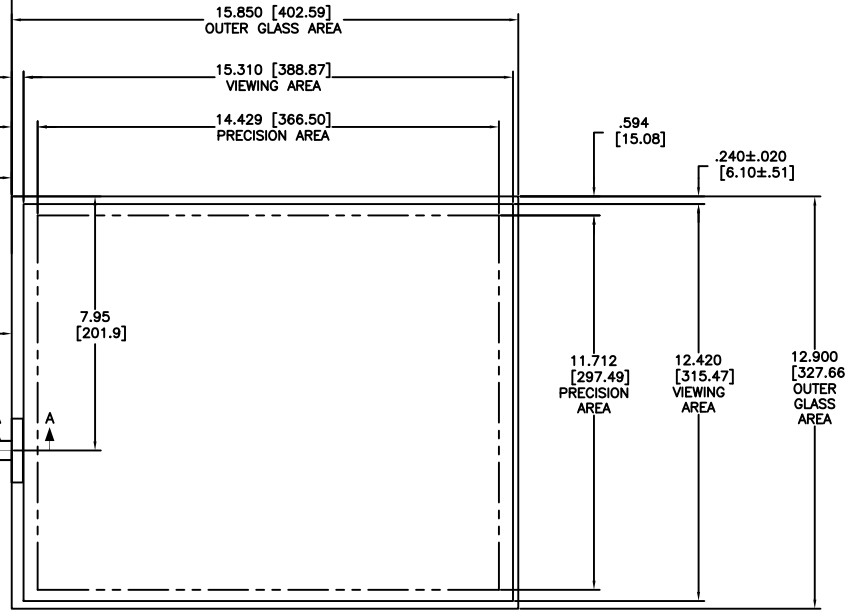
THIS PRODUCT IS MANUFACTURED IN ACCORDANCE WITH THE CURRENT CLEARTEK II CAPACITIVE TOUCH SCREEN SPECIFICATION 23655.

OGA DIAGONAL: 20.44 [519.08]
 VA DIAGONAL: 19.71 [500.74]
 PA DIAGONAL: 18.58 [472.03]

ESD CLAMSHELL CASE IS USED WITH ALL NOV, USB AND SER TERMINATIONS.



TOP LEVEL NUMBER	TYPE	DIM "A" (TOTAL GLASS TO CONNECTOR)	A/G FINISH
17-8051-203	FFC	4.27" [108.46]	AG500
17-8051-205	FFC	8.00" [203.20]	AG500
17-8051-206	NOV	SEE DWG	AG500
17-8051-217	USB	4.27" [108.46]	AG500
17-8051-221	SER	4.27" [108.46]	AG500
17-8051-225	USB	8.00" [203.20]	AG500
17-8051-227	SER	8.00" [203.20]	AG500



PINOUT	
1	LR
2	LL
3	SHIELD
4	UL
5	UR

- NOTES:**
- WEIGHT OF GLASS IN GRAMS: 1004.99±10%
 - 5 PIN AMP CONNECTOR LATCH STYLE HOUSING P/N: 487526-4 TIN CONTACTS P/N: 2-487406-4 HOUSING ORIENTED WITH LATCH DOWN

UNITS INCHES [MM]
 TOLERANCES UNLESS OTHERWISE SPECIFIED
 .X ±
 .XX ±.03 [.76]
 .XXX ±.015 [.38]
 ANGLES ±1°
 THIRD ANGLE PROJECTION
 DO NOT SCALE DRAWING
 SCALE 1 = 1

3M 3M TOUCH SYSTEMS
 METHUEN, MA
 USA
 © COPYRIGHT 2005
 THIS DOCUMENT IS COPYRIGHTED PROPERTY OF THE 3M COMPANY AND MAY NOT BE REPRODUCED WITHOUT 3M WRITTEN PERMISSION OR USED OR DISCLOSED FOR OTHER THAN 3M AUTHORIZED PURPOSES.
 DRAWN K. CROWLEY 9/05

REV	CHANGE NOTICE	DATE	DRW
03	REVISED PER CO 028528	1/08	AH
02	REVISED PER CO 026945	2/07	MDS
01	INITIAL RELEASE PER CO 021839	9/05	KAC

TITLE
MARKETING DRAWING
 17-805X-2XX
 CAD FORMAT AUTOCAD SHEET 1 OF 1
 SIZE C DOCUMENT NO. 28177-MKT REV 03