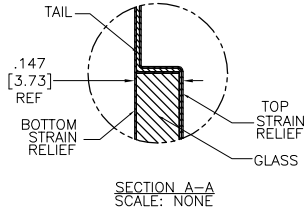


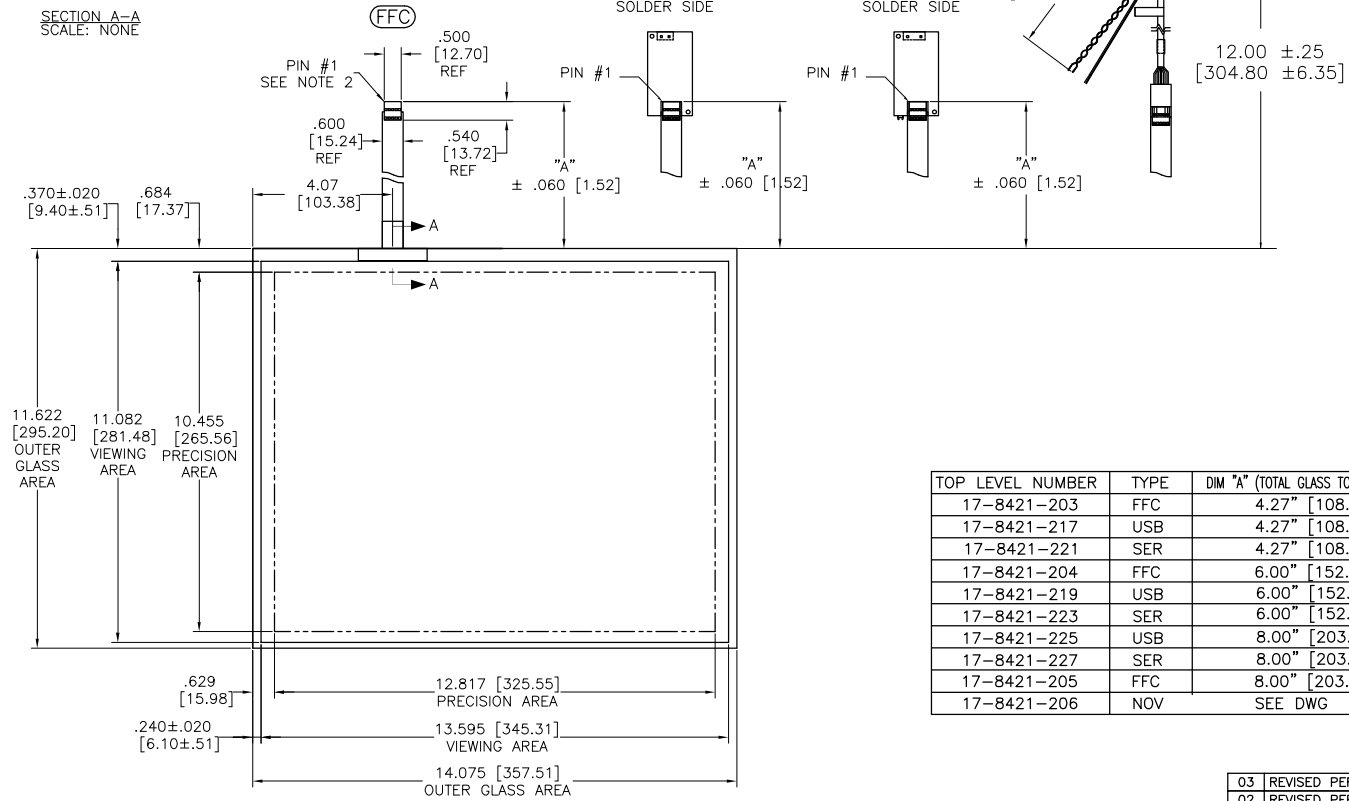
OGA DIAGONAL: 18.25 [463.63]
 VA DIAGONAL: 17.54 [445.50]
 PA DIAGONAL: 16.54 [420.12]

THIS PRODUCT IS MANUFACTURED IN ACCORDANCE WITH THE CURRENT CLARTEK II CAPACITIVE TOUCH SCREEN SPECIFICATION (DOCUMENT 23655)



.147±.020 [3.73±.51]
 TOTAL THICKNESS OF GLASS, CABLE AND STRAIN RELIEF

.125 [3.18] REF



TOP LEVEL NUMBER	TYPE	DIM "A" (TOTAL GLASS TO CONNECTOR)	A/G FINISH
17-8421-203	FFC	4.27" [108.46]	AG500
17-8421-217	USB	4.27" [108.46]	AG500
17-8421-221	SER	4.27" [108.46]	AG500
17-8421-204	FFC	6.00" [152.40]	AG500
17-8421-219	USB	6.00" [152.40]	AG500
17-8421-223	SER	6.00" [152.40]	AG500
17-8421-225	USB	8.00" [203.20]	AG500
17-8421-227	SER	8.00" [203.20]	AG500
17-8421-205	FFC	8.00" [203.20]	AG500
17-8421-206	NOV	SEE DWG	AG500

REV	CHANGE NOTICE	DATE	DRW
03	REVISED PER CO 028276	11/07	AH
02	REVISED PER CO 026939	1/07	SB
01	RELEASE PER ECO 021838	9/05	KAC

NOTES:

1. WEIGHT OF GLASS IN GRAMS: 804.03±10%
2. 5 PIN AMP CONNECTOR LATCH STYLE HOUSING P/N: 487526-4
 TIN CONTACTS P/N: 2-487406-4
 HOUSING ORIENTED WITH LATCH DOWN

PINOUT	
1	LL
2	UL
3	SHLD
4	UR
5	LR

UNITS	INCHES [MM]
TOLERANCES UNLESS OTHERWISE SPECIFIED	
.X	±
.XX	±.03 [.76]
.XXX	±.015 [.38]
ANGLES	±1°
THIRD ANGLE PROJECTION	
DO NOT SCALE DRAWING	
SCALE	1 = 1

3M 3M TOUCH SYSTEMS
 METHUEN, MA
 USA

©COPYRIGHT 2004
 THIS DOCUMENT IS COPYRIGHTED PROPERTY OF THE 3M COMPANY AND MAY NOT BE REPRODUCED WITHOUT 3M WRITTEN PERMISSION OR USED OR DISPLAYED FOR OTHER THAN 3M AUTHORIZED PURPOSES.

DRAWN: K CROWLEY 08/05

TITLE: MARKETING DRAWING
 17-8421-2XX

CAD FORMAT: AUTOCAD SHEET: 1 OF 1

SIZE: C DOCUMENT NO: 28165-MKT REV: 03