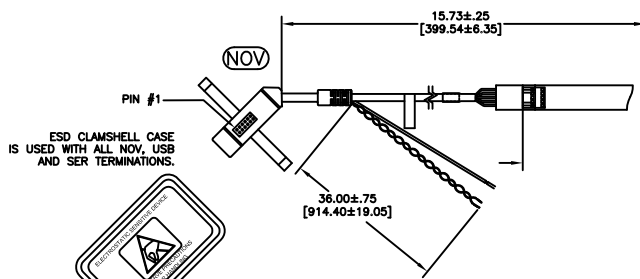


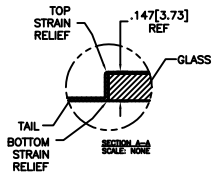
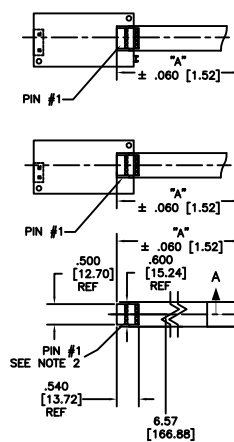
OGA DIAGONAL: 24.82 [630.48]  
 VA DIAGONAL: 23.83 [605.19]  
 PA DIAGONAL: 22.45 [570.18]

| TOP LEVEL NUMBER | SKU 98 NUMBER  | TYPE  | DIM "A" (TOTAL GLASS TO CONNECTOR) | A/G FINISH | PROD SPEC |
|------------------|----------------|-------|------------------------------------|------------|-----------|
| 17-9051-205      | 98-0003-2687-0 | FFC   | 8.00" [203.20]                     | AG500      | 23655     |
| 17-9051-227      | 98-0003-2689-6 | SER   | 8.00" [203.20]                     | AG500      | 23655     |
| 17-9051-206      | 98-0003-2688-8 | NOV   | SEE DWG                            | AG500      | 23655     |
| 17-9051-226      | 98-0003-3035-1 | USB R | 8.00" [203.20]                     | AG500      | 23655     |

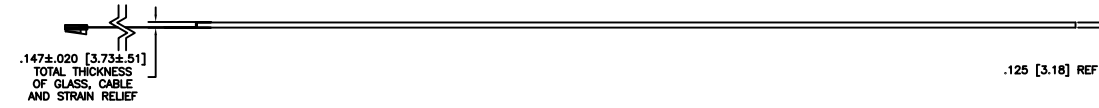


**(SER)**  
 EXII-7720SC  
 98-0003-2217-6  
 SERIAL CONTROLLER  
 SOLDER SIDE

**(USB R)**  
 EXII-7760UC  
 98-0003-2814-0  
 USB CONTROLLER  
 SOLDER SIDE



**(FFC)**



- NOTES:
- WEIGHT OF GLASS IN GRAMS: 1248±10%
  - 5 PIN AMP CONNECTOR LATCH STYLE HOUSING P/N: 487526-4  
 TIN CONTACTS P/N: 2-487406-4  
 HOUSING ORIENTED WITH LATCH DOWN

| PINOUT |      |
|--------|------|
| 1      | LR   |
| 2      | LL   |
| 3      | SHLD |
| 4      | UL   |
| 5      | UR   |

UNITS INCHES [MM]

TOLERANCES UNLESS OTHERWISE SPECIFIED

.X ±  
 .XX ±.03 [.76]  
 .XXX ±.015 [.38]  
 ANGLES ±1°

THIRD ANGLE PROJECTION

DO NOT SCALE DRAWING

SCALE 1 = 1

**3M** 3M TOUCH SYSTEMS  
 METHUEN, MA  
 USA

© COPYRIGHT 2004  
 THIS DOCUMENT IS COPYRIGHTED PROPERTY OF THE 3M COMPANY AND MAY NOT BE REPRODUCED WITHOUT 3M WRITTEN PERMISSION OR USED OR DISCLOSED FOR OTHER THAN 3M AUTHORIZED PURPOSES.

DRAWN MTD 03/16/06

|                                       |                        |              |     |
|---------------------------------------|------------------------|--------------|-----|
| 06                                    | REVISED PER CO 030452  | 6/09         | SB  |
| 05                                    | REVISED PER CO 028687  | 2/08         | ACM |
| 04                                    | REVISED PER CO 026862  | 1/22/07      | SB  |
| REV                                   | CHANGE NOTICE          | DATE         | DRW |
| TITLE                                 |                        |              |     |
| MARKETING DRAWING<br>SCT32NN 23.83" W |                        |              |     |
| DAD FORMAT AUTOCAD                    |                        | SHEET 1 OF 1 |     |
| SIZE C                                | DOCUMENT NO. 31379-MKT | REV 06       |     |