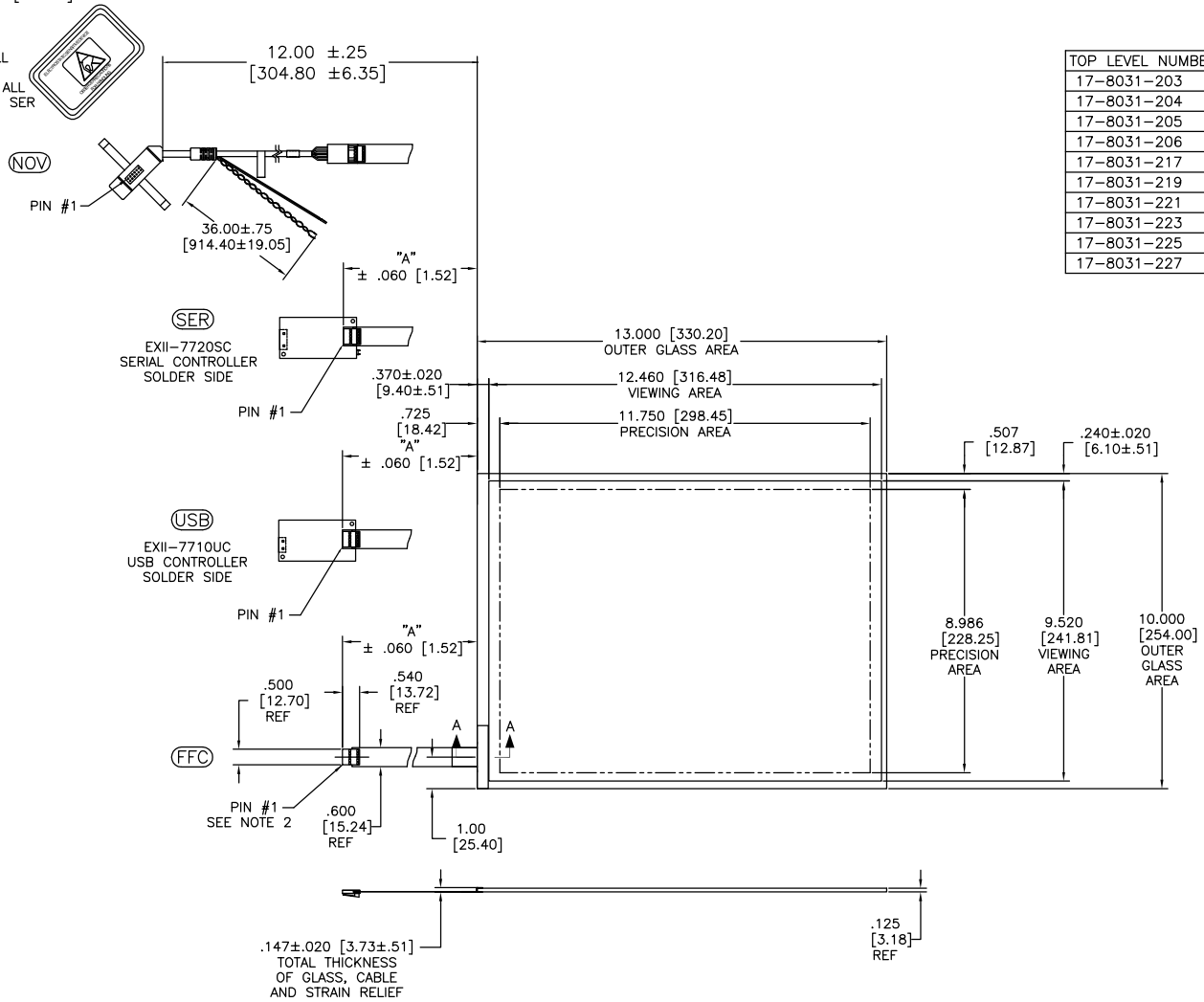


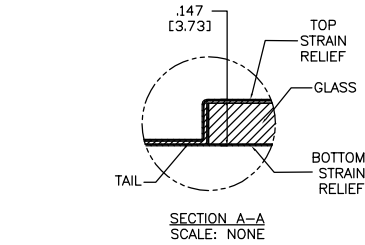
THIS PRODUCT IS MANUFACTURED IN ACCORDANCE WITH THE CURRENT CLEARTEK II CAPACITIVE TOUCH SCREEN SPECIFICATION (DOCUMENT 23655)

OGA DIAGONAL: 16.40 [416.59]  
VA DIAGONAL: 15.68 [398.29]  
PA DIAGONAL: 14.79 [375.72]

ESD CLAMSHELL CASE IS USED WITH ALL NOV, USB AND SER TERMINATIONS.



| TOP LEVEL NUMBER | TYPE | DIM "A" (TOTAL GLASS TO CONNECTOR) | A/G FINISH |
|------------------|------|------------------------------------|------------|
| 17-8031-203      | FFC  | 4.27" [108.46]                     | AG500      |
| 17-8031-204      | FFC  | 6.00" [152.40]                     | AG500      |
| 17-8031-205      | FFC  | 8.00" [203.20]                     | AG500      |
| 17-8031-206      | NOV  | SEE DWG                            | AG500      |
| 17-8031-217      | USB  | 4.27" [108.46]                     | AG500      |
| 17-8031-219      | USB  | 6.00" [152.40]                     | AG500      |
| 17-8031-221      | SER  | 4.27" [108.46]                     | AG500      |
| 17-8031-223      | SER  | 6.00" [152.40]                     | AG500      |
| 17-8031-225      | USB  | 8.00" [203.20]                     | AG500      |
| 17-8031-227      | SER  | 8.00" [203.20]                     | AG500      |



| PINOUT |      |
|--------|------|
| 1      | LR   |
| 2      | LL   |
| 3      | SHLD |
| 4      | UL   |
| 5      | UR   |

- NOTES:
- WEIGHT OF GLASS IN GRAMS: 638.98 ±10%
  - 5 PIN AMP CONNECTOR LATCH STYLE HOUSING P/N: 487526-4  
TIN CONTACTS P/N: 2-487406-4  
HOUSING ORIENTED WITH LATCH DOWN

| UNITS                                 | INCHES [MM] |
|---------------------------------------|-------------|
| TOLERANCES UNLESS OTHERWISE SPECIFIED |             |
| .X                                    | ±           |
| .XX                                   | ±.03 [.76]  |
| .XXX                                  | ±.015 [.38] |
| ANGLES                                | ±1°         |
| THIRD ANGLE PROJECTION                |             |
| DO NOT SCALE DRAWING                  |             |
| SCALE                                 | 1 = 1       |

**3M** 3M TOUCH SYSTEMS  
METHUEN, MA  
USA

©COPYRIGHT 2005  
THIS DOCUMENT IS COPYRIGHTED PROPERTY OF THE 3M COMPANY AND MAY NOT BE REPRODUCED WITHOUT 3M WRITTEN PERMISSION OR USED OR DISPLAYED FOR OTHER THAN 3M AUTHORIZED PURPOSES.

DRAWN: CROWLEY 9/05

| REV | CHANGE NOTICE         | DATE | DRW |
|-----|-----------------------|------|-----|
| 02  | REVISED PER CO 026945 | 2/07 | MDS |
| 01  | RELEASE PER CO 021541 | 9/05 | KAC |

TITLE: MARKETING DRAWING  
17-803X-2XX

|                     |                         |
|---------------------|-------------------------|
| CAD FORMAT: AUTOCAD | SHEET: 1 OF 1           |
| SIZE: C             | DOCUMENT NO.: 28138-MKT |
| SCALE: 1 = 1        | REV: 02                 |