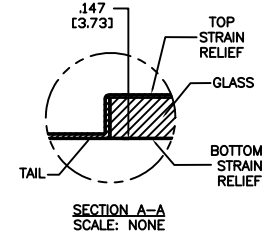
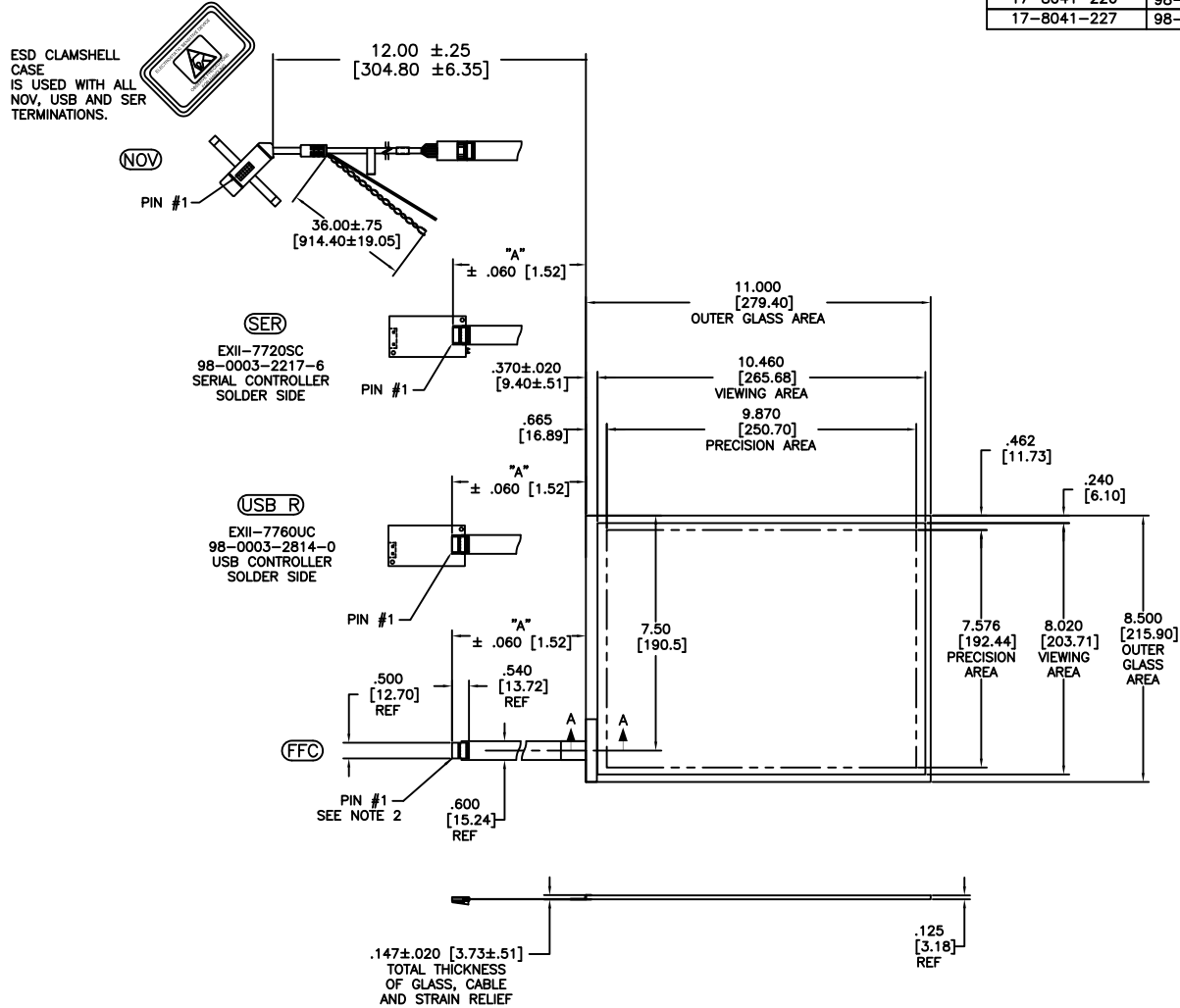


OGA DIAGONAL: 13.90 [353.10]
 VA DIAGONAL: 13.18 [334.79]
 PA DIAGONAL: 12.44 [316.04]

TOP LEVEL NUMBER	SKU 98 NUMBER	TYPE	DIM "A" (TOTAL GLASS TO CONNECTOR)	A/G FINISH	PROD SPEC
17-8041-203	98-0003-2526-0	FFC	4.27" [108.46]	AG500	23655
17-8041-205	98-0003-3229-0	FFC	8.00" [203.20]	AG500	23655
17-8041-206	98-0003-2527-8	NOV	SEE DWG	AG500	23655
17-8041-221	98-0003-2530-2	SER	4.27" [108.46]	AG500	23655
17-8041-223	98-0003-2531-0	SER	6.00" [152.40]	AG500	23655
17-8041-226	98-0003-3230-8	USB R	8.00" [203.20]	AG500	23655
17-8041-227	98-0003-3231-6	SER	8.00" [203.20]	AG500	23655



PINOUT	
1	LR
2	LL
3	SHIELD
4	UL
5	UR

05	REVISED PER CO 030452	5/09	SEB
04	REVISED PER CO 030072	3/09	MTD
03	REVISED PER CO 026945	2/07	MDS
REV	CHANGE NOTICE	DATE	DRW

NOTES:

1. WEIGHT OF GLASS IN GRAMS: 460±10%
2. 5 PIN AMP CONNECTOR LATCH STYLE HOUSING P/N: 487526-4
TIN CONTACTS P/N: 2-487406-4
HOUSING ORIENTED WITH LATCH DOWN.

UNITS	INCHES [MM]	3M 3M TOUCH SYSTEMS METHUEN, MA USA	
TOLERANCES UNLESS OTHERWISE SPECIFIED			
.X	±	© COPYRIGHT 2005 THIS DOCUMENT IS COPYRIGHTED PROPERTY OF THE 3M COMPANY AND MAY NOT BE REPRODUCED WITHOUT 3M WRITTEN PERMISSION OR USED OR DISCLOSED FOR OTHER THAN 3M AUTHORIZED PURPOSES.	
.XX	±.03 [.76]		
.XXX	±.015 [.38]		
ANGLES ±1°			
THIRD ANGLE PROJECTION			
DO NOT SCALE DRAWING		DRAWN	K. CROWLEY 9/05
SCALE 1 = 1		CHG FORMAT	AUTOCAD
		SHEET	1 OF 1
		SIZE	C
		DOCUMENT NO.	28265-MKT
		REV	05

TITLE			
MARKETING DRAWING SCT32NN 13.18"			
CHG FORMAT		AUTOCAD	
SHEET		1 OF 1	
SIZE		C	
DOCUMENT NO.		28265-MKT	
REV		05	