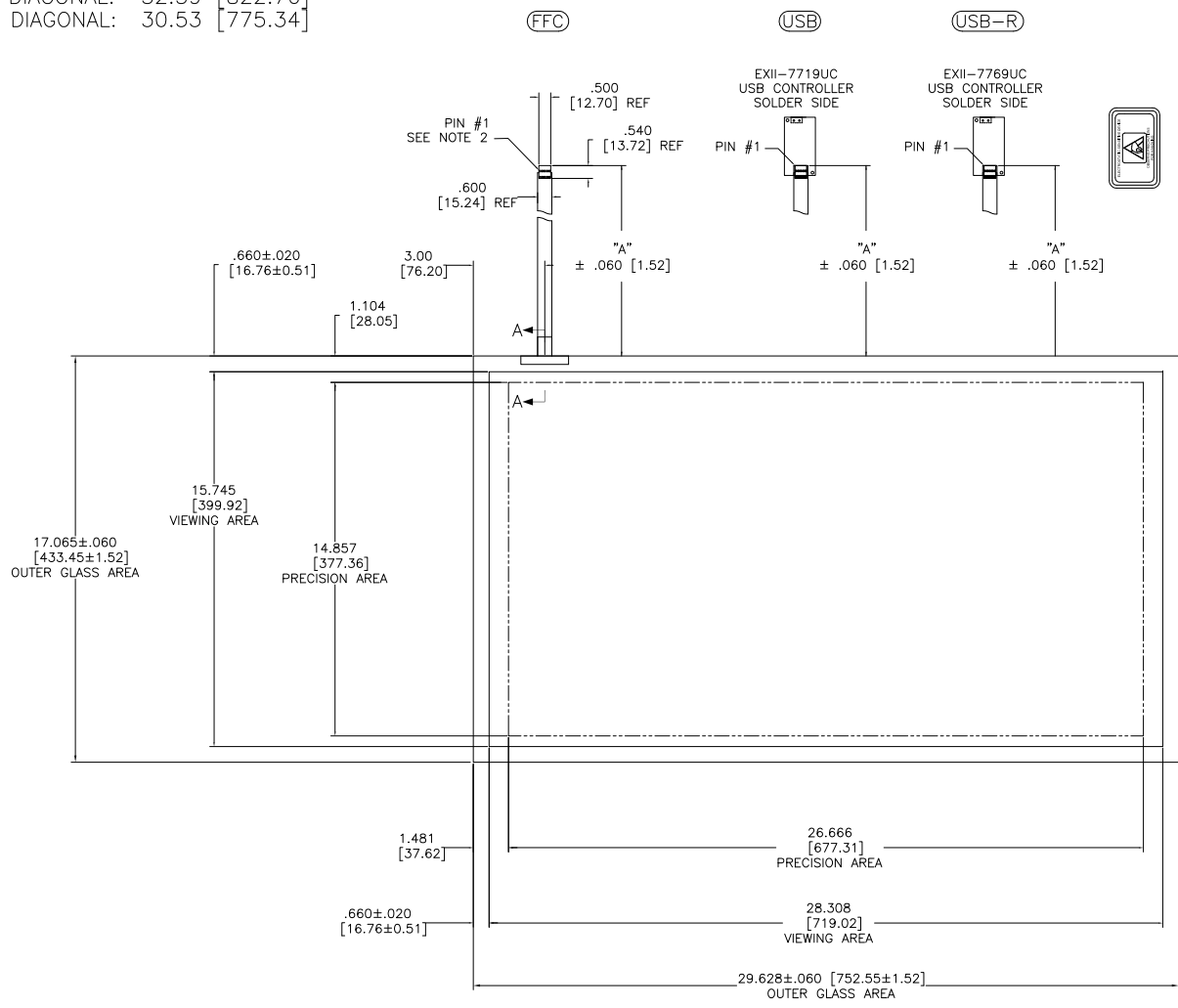
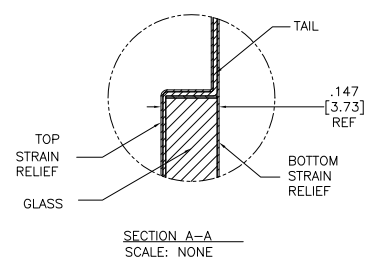


THIS PRODUCT IS MANUFACTURED IN ACCORDANCE WITH THE CURRENT CLEARTEK II CAPACITIVE TOUCHSCREEN SPECIFICATION (DOCUMENT 23655).

OGA DIAGONAL: 34.19 [868.45]
 VA DIAGONAL: 32.39 [822.76]
 PA DIAGONAL: 30.53 [775.34]



ESD CLAMSHELL CASE IS USED WITH ALL NOV, USB AND SER TERMINATIONS.



TOP LEVEL NUMBER	TYPE	DIM "A" (TOTAL GLASS TO CONNECTOR)	ETCH
17-9121-205	FFC	8.00" [203.20]	AG500
17-9121-225	USB	8.00" [203.20]	AG500
17-9121-226	USB-R	8.00" [203.20]	AG500

- NOTES:
1. WEIGHT OF GLASS IN GRAMS: 2485.14±10%
 2. 5 PIN AMP CONNECTOR LATCH STYLE HOUSING P/N: 487526-4
 TIN CONTACTS P/N: 2-487406-4
 HOUSING ORIENTED WITH LATCH DOWN

PINOUT	
1	LL
2	UL
3	SHLD
4	UR
5	LR

UNITS INCHES [MM]

3M 3M TOUCH SYSTEMS METHUEN, MA USA

© COPYRIGHT THIS DOCUMENT IS COPYRIGHTED PROPERTY OF THE 3M COMPANY AND MAY NOT BE REPRODUCED WITHOUT 3M WRITTEN PERMISSION OR USED OR DISCLOSED FOR OTHER THAN 3M AUTHORIZED PURPOSES.

THIRD ANGLE PROJECTION

DO NOT SCALE DRAWING

SCALE 1 = 1

DRAWN AH 8/07

REV	CHANGE NOTICE	DATE	DRW
03	REVISE PER CO 029214	7/08	AH
02	REVISE PER CO 028811	3/08	MTD
01	RELEASE PER CO 027900	8/07	MTD

TITLE

MARKETING DRAWING
17-9121-2XX

CAD FORMAT AUTOCAD SHEET 1 OF 1

SIZE E DOCUMENT NO. 34642-MKT REV 03