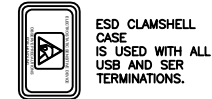
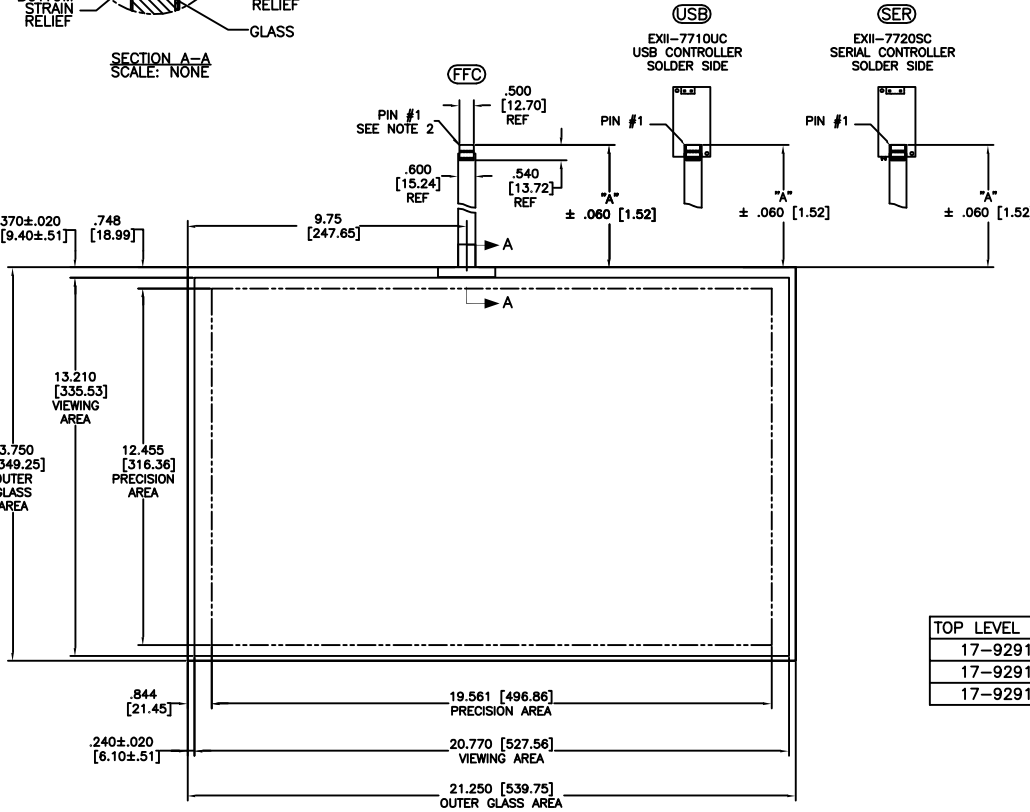
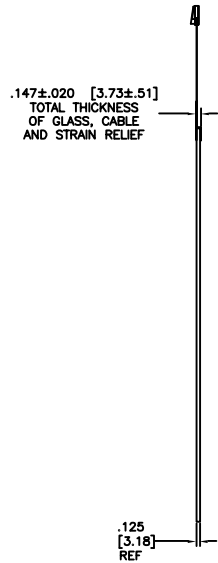
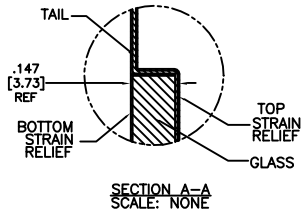


OGA DIAGONAL: 25.31 [642.89]  
 VA DIAGONAL: 24.62 [625.22]  
 PA DIAGONAL: 23.19 [589.02]

THIS PRODUCT IS MANUFACTURED IN ACCORDANCE WITH THE CURRENT CLEARTEK II CAPACITIVE TOUCH SCREEN SPECIFICATION (DOCUMENT 23655).



TOP LEVEL NUMBER	TYPE	DIM "A" (TOTAL GLASS TO CONNECTOR)	A/G FINISH
17-9291-205	FFC	8.00" [203.20]	AG500
17-9291-225	USB	8.00" [203.20]	AG500
17-9291-227	SER	8.00" [203.20]	AG500

- NOTES:
- WEIGHT OF GLASS IN GRAMS: 1495.97±10%
  - 5 PIN AMP CONNECTOR LATCH STYLE HOUSING P/N: 487526-4  
 TIN CONTACTS P/N: 2-487406-4  
 HOUSING ORIENTED WITH LATCH DOWN

PINOUT	
1	LL
2	UL
3	SHLD
4	UR
5	LR

UNITS INCHES [MM]  
 TOLERANCES UNLESS OTHERWISE SPECIFIED  
 .X ±  
 .XX ±.03 [.76]  
 .XXX ±.015 [.38]  
 ANGLES ±1°  
 THIRD ANGLE PROJECTION  
 DO NOT SCALE DRAWING  
 SCALE 1 = 1

**3M** 3M TOUCH SYSTEMS  
 METHUEN, MA  
 USA  
 © COPYRIGHT 2004  
 THIS DOCUMENT IS COPYRIGHTED PROPERTY OF THE 3M COMPANY AND MAY NOT BE REPRODUCED WITHOUT 3M WRITTEN PERMISSION OR USED OR DISCLOSED FOR OTHER THAN 3M AUTHORIZED PURPOSES.  
 DRAWN MTD 1/17/06

01	RELEASED PER CO 019308	1/07	MTD
REV	CHANGE NOTICE	DATE	DRW
TITLE			
MARKETING DRAWING			
17-9291-2XX			
CAD FORMAT	AUTOCAD	SHEET	1 OF 1
REV	DOCUMENT NO.	REV	
C	33407-MKT	01	