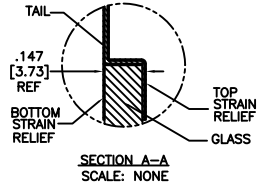
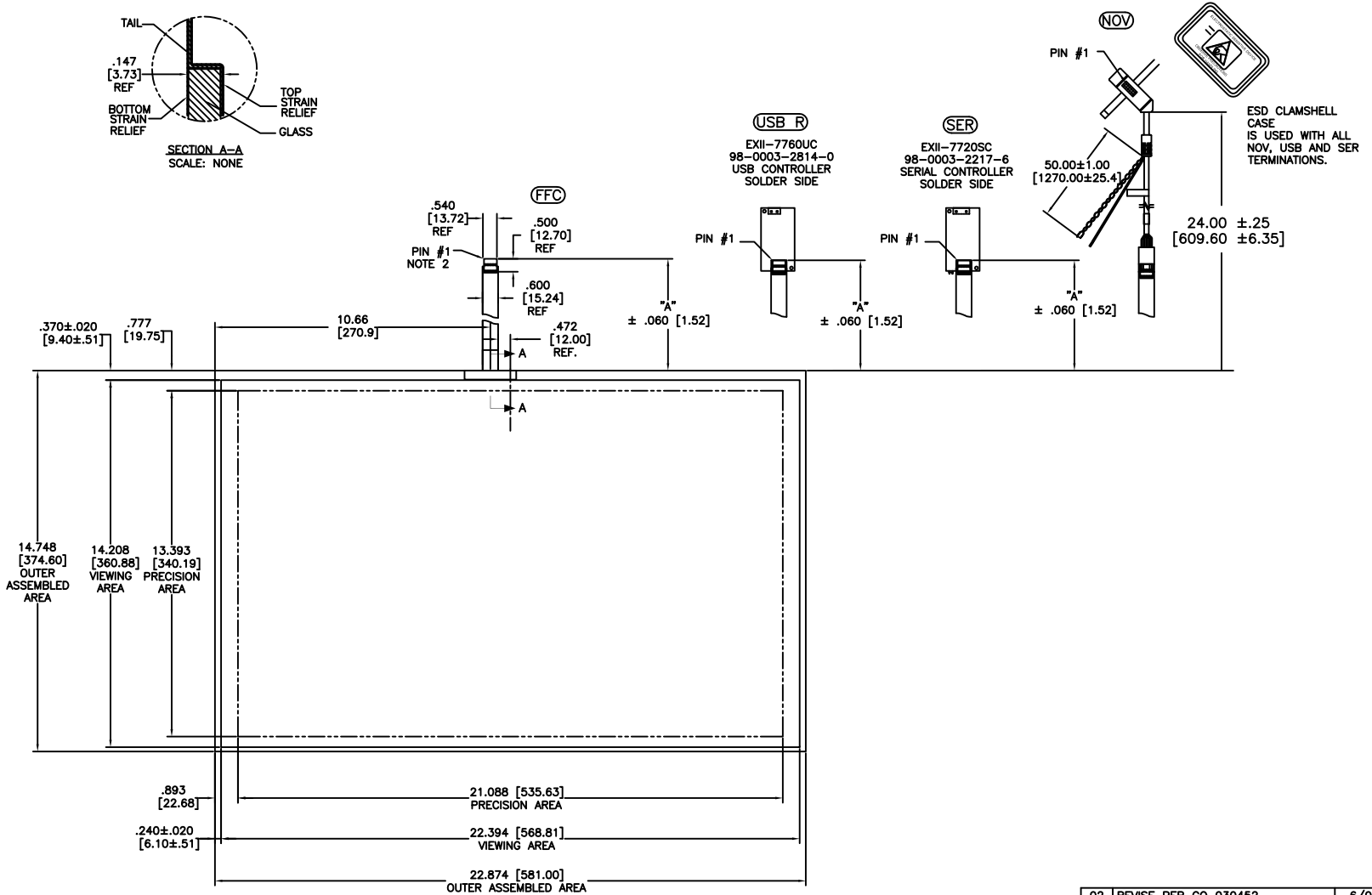


OGA DIAGONAL: 27.22 [691.39]
 VA DIAGONAL: 26.52 [673.61]
 PA DIAGONAL: 24.98 [634.49]

TOP LEVEL NUMBER	SKU 98 NUMBER	TYPE	DIM "A" (TOTAL GLASS TO CONNECTOR)	A/G FINISH	PROD SPEC
17-9501-205	98-0003-3115-1	FFC	8.00" [203.20]	AG500	23655
17-9501-226	98-0003-3117-7	USB R	8.00" [203.20]	AG500	23655
17-9501-227	98-0003-3118-5	SER	8.00" [203.20]	AG500	23655
17-9501-206	98-0003-3116-9	NOV	SEE DWG	AG500	23655



.147±.020 [3.73±.51]
 TOTAL THICKNESS
 OF GLASS, CABLE
 AND STRAIN RELIEF



NOTES:

1. WEIGHT OF GLASS IN GRAMS: 1727±10%
2. 5 PIN AMP CONNECTOR LATCH STYLE HOUSING P/N: 487526-4
 TIN CONTACTS P/N: 2-487406-4
 HOUSING ORIENTED WITH LATCH DOWN

PINOUT	
1	LL
2	UL
3	SHLD
4	UR
5	LR

UNITS	INCHES [MM]
TOLERANCES UNLESS OTHERWISE SPECIFIED	
.X	± .03 [.76]
.XX	± .015 [.38]
.XXX	± .01 [.25]
ANGLES	±1°

3M 3M TOUCH SYSTEMS
 METHUEN, MA
 USA

© COPYRIGHT 2004
 THIS DOCUMENT IS COPYRIGHTED PROPERTY OF THE 3M COMPANY AND MAY NOT BE REPRODUCED WITHOUT 3M WRITTEN PERMISSION OR USED OR DISCLOSED FOR OTHER THAN 3M AUTHORIZED PURPOSES.

THIRD ANGLE PROJECTION

DO NOT SCALE DRAWING

SCALE 1 = 1

REV	CHANGE NOTICE	DATE	DRW
02	REVISE PER CO 030452	6/09	SB
01	RELEASE PER CO 029012	5/08	MTD

TITLE

MARKETING DRAWING
 SCT32NN 26.52" W

DRAWN MTD 5/13/08

CAD FORMAT AUTOCAD SHEET 1 OF 1

SIZE C DOCUMENT NO. 35704-MKT REV 02